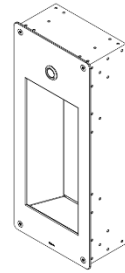


Product Installation Guidelines & Scope of Use

Version 1, 26 May 2026, Page 1 of 7
Document No.: 122.64.03.11

GalvinCare® Lead Safe™ Concealed Electronic Bottle Filler Unit



PRODUCT CODE:

- 122.64.03.11

SPECIFICATIONS

- GalvinCare® Lead Safe™ Concealed assemblies provide the complete anti-vandal, anti-ligature solution. The unique electronic valve assembly provides precise delivery of water and is specifically designed for high risk and secure environments.
- 3mm thick, exposed stainless-steel faceplate to suit in-wall mounted applications.
- Faceplate features piezo activation button.
- Compatible with Electronic Controllers (123.20.13.90 / 123.20.23.90)
- Lead Safe™ brass construction for internal fittings.*

IMPORTANT: All GalvinCare® items are tested in accordance with AS 3718 and leave our premises in good working order.

*Our Lead Safe™ product range is compliant with the Lead Free Requirements of the NCC 2022 Vol. Three, Clause A5G4(2) and NSF/ANSI 372.
**Any flow controller incorporated in the outlet to be tightened to prevent removal by hand. As Per AS3718.

WARNINGS: Special attentions to be paid on notes, photos, images, or drawings of assembly steps marked with the warning symbol.



TECHNICAL DATA

Inlet		½" BSP - Male		
Outlet	Bottle Filler	Domed		
	Drain	½" BSP - Male		
Headwork		Solenoid Valve		
Working Pressure Range (kPa)	Min	50		
	Max	500		
Working Temperature Range (°C)	Min	5		
	Max	60		
Nominal Flow Rate (LPM)		N/A		
Solenoid Valve	Input Voltage		12V DC	
	Connection	Inlet	½" BSP - Male	
		Outlet	½" BSP - Male	
	Pressure Range (kPa)	Min	50	
		Max	500	
	Temperature (°C)	Min	5	
Max		60		
Activation		Piezo Button		
Finish		Stainless Steel		


NOTE: Galvin Engineering continually strives to improve their products. Specifications may change without notice.

PRE - INSTALLATION

IMPORTANT:

- **INSTALLATION COMPLIANCE:** Galvin Engineering products must be installed in accordance with these installation instructions and in accordance with AS/NZS 3500, the PCA and your local regulatory requirements. Water and/or electrical supply conditions must also comply to the applicable national and/or state standards. Failing to comply with these provisions shall void the product warranty and may affect the performance of the product (Refer supplied installation compliance sheet with the product).
- Before proceeding with installation first check the solenoid valve supplied is suitable for the site water pressure and conditions. If your water pressure is outside the stated range, please contact Galvin Engineering.
- Ensure all supply lines are flushed thoroughly to remove debris prior to the installation of this product.
- It is recommended that a line strainer & isolating valve is installed upstream to the solenoid valve to allow for servicing.
- Whilst our product designs consider a broad range of installation types and surfaces, it is important that surfaces which the fixtures are mounted to are flat and free from defect. This is especially important for our GalvinCare® range where special attention is required to minimise ligature points and areas for concealment of contraband. Ensure the products are fitted securely and in accordance with the following instructions.
- Most installation problems are due to damage to the unit during installation or the selection of an inappropriate installation location. Select the location carefully and take care with the installation, consider ease of operation for the end user.

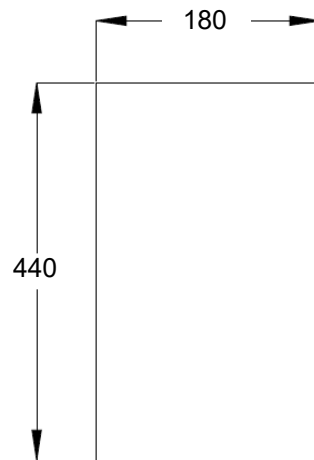
GENERAL INSTALLATION REQUIREMENTS

- Suitable access for servicing all components must be provided (including back-of-wall access for easier water flow adjustment, see Installation Step 5). 
- It is recommended that acoustic dampening products or materials be used in facilities where increased levels of sound protection are required. A water hammer arrestor may also be required.
- We recommend fitting isolating valves before solenoid valve for easy servicing.
- Do not apply heat near this product when connecting the water line. Heat generated by soldering could damage plastic or electrical parts and seals and will void the warranty.
- For personal installation assistance and spare parts, please call our head office on 1300 514 074 and speak to our customer service staff.

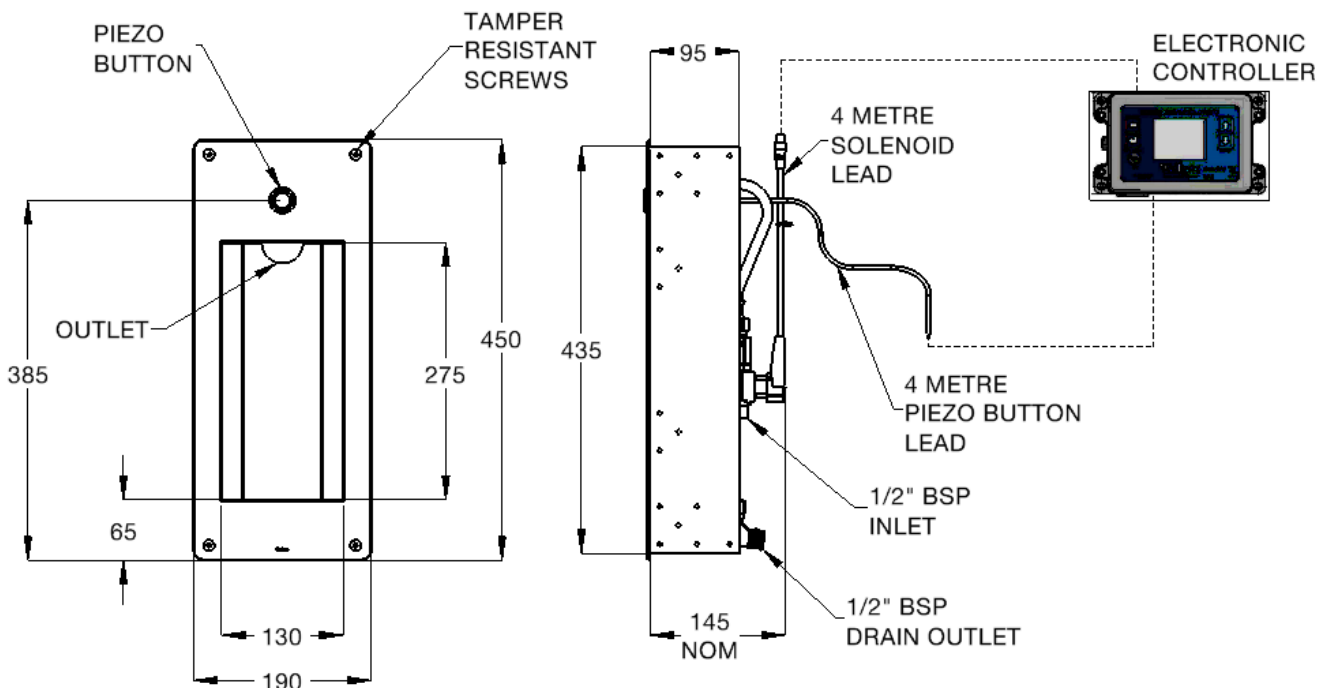
MOUNTING DETAILS

Cut out details for face plate

- This shower assembly is to suit wall thicknesses of 170mm minimum with rear access to the unit available. Ensure the cut-out details are as below.

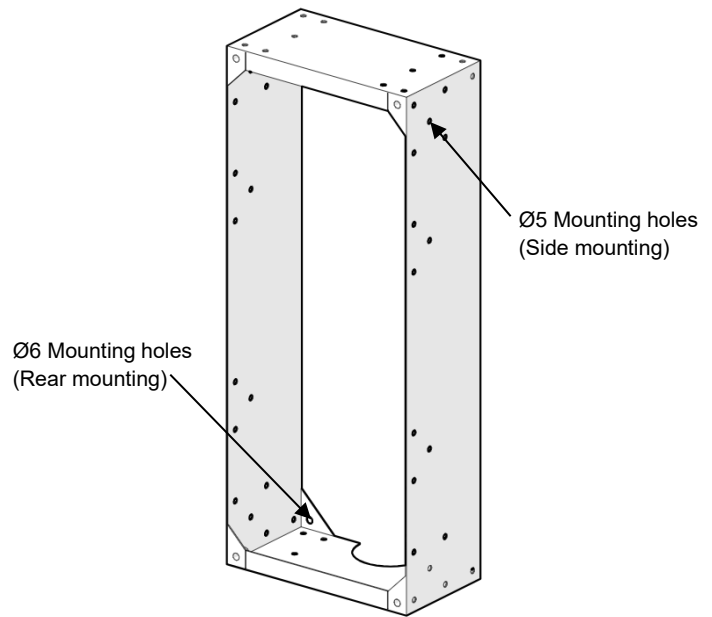
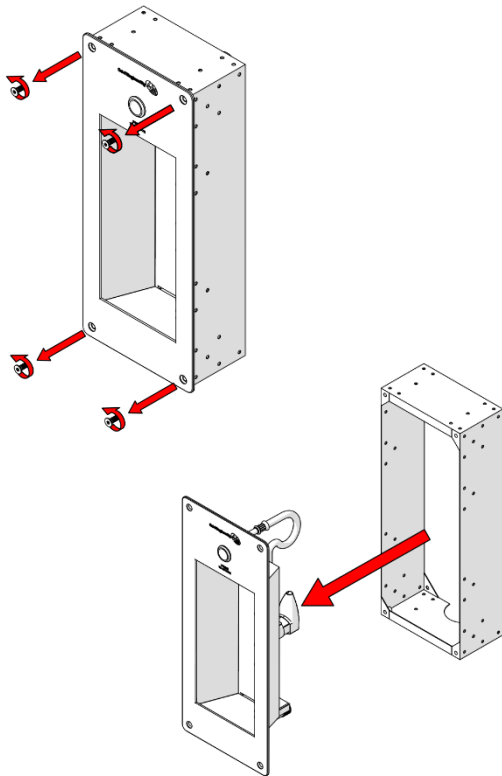


Component Dimensions



INSTALLATION

- ⚠ Avoid common installation errors :**
- Incorrect supply pipe size installed
 - Non-compliance to Australian Standards
 - Water pressure not tested before installation
 - Lines not flushed before installation
 - No access for service



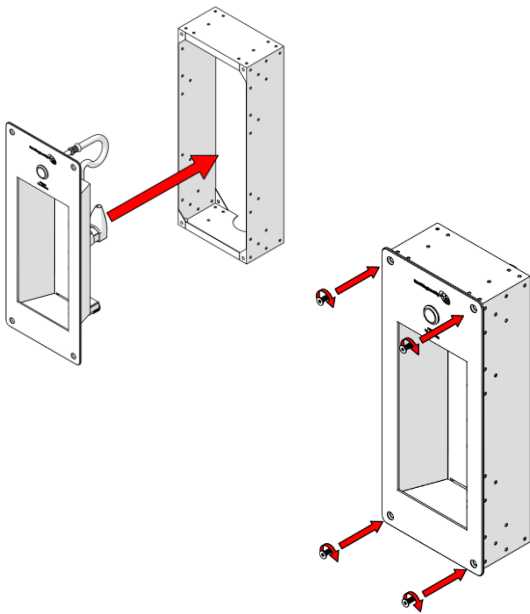
1. Disassemble

- Remove face plate screws as shown.
- Ensure leads aren't connected to the controller.
- Remove face plate.

2. Fit Wall Box

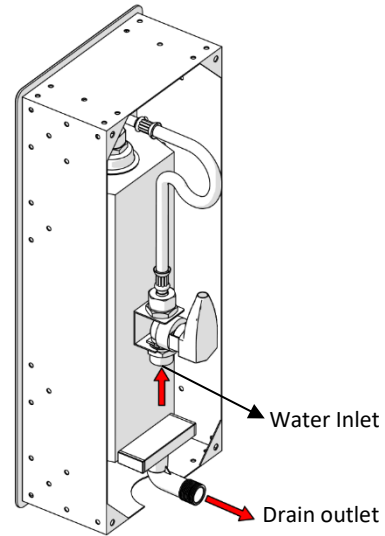
- Before mounting the box, ensure the wall cut out and thickness is as per mounting details above.
- Multiple mounting holes are provided on the box to suit different installations. Secure the box inside the wall using suitable fasteners (not supplied).

⚠ Important: The front face of the box must be flat with or sit slightly below the finished wall. The front face of the box must not be protruding of the finished wall.



3. Fit Faceplate

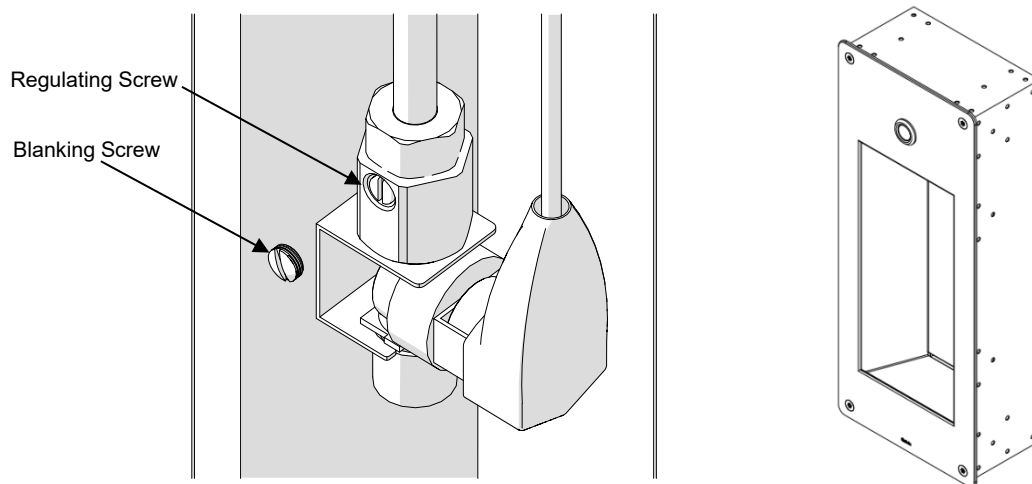
- Fit and tighten screws as shown.
- Ensure the head of the screws sit flush or slightly below the faceplate and the faceplate sits flush with the finished wall.



4. Connections

- Connect mains water and drain outlet to the connections shown. Thread tape/sealant should be used.
- Connect piezo button and solenoid valve to the Electronic Controller (not supplied).
- If the solenoid valve needs to be moved, the installer can do so by disassembling the connections and removing the valve from the bracket. When adjusting, ensure the valve will be fixed in position before reassembling components.
- Use thread tape/sealant when reassembling to ensure connections are water tight.

⚠ Do not cut the leads. If the leads are too long, it is recommended that any excess is coiled up and clipped to the wall.



5. Test

- Once fitted, test the bottle filler for leaks and correct operation.
- To adjust water flow (if required)
 1. Remove the blanking screw
 2. Adjust the water flow by turning the regulating screw
 3. Refit blanking screw

⚠ Note: The full range from minimum flow to maximum flow is only $\frac{1}{4}$ turn

TROUBLE SHOOTING

PROBLEM	CAUSE	RECTIFICATION
No water flow	Faulty solenoid valve	Check electrical connections, Replace solenoid valve
	Water or structural damage to electrical components	Replace damaged electrical components
	Incorrect connections	Check all connections
	Damage to piezo lead	Check and replace lead & controllers
	Water corroded electrical connections	Replace electronic components
	Solenoid valve jammed open	Remove obstruction from solenoid
	No power	Check controller is plugged in
	Blocked flow regulating screw	Remove flow regulating screw and clean

WARRANTY

Galvin Engineering products are covered under our Manufacturer's Warranty. Galvin Engineering products must be installed in accordance with the installation instructions and in accordance with AS/NZS 3500 and NCC Volume Three, relevant Australian Standards and local authorities applicable to product being installed. Water and electrical supply conditions must also comply to the applicable national and/or state standards, failing to comply with these provisions may void the product warranty and affect performance of the product.

Please visit www.galvinengineering.com.au to view the full warranty, our Installation Compliance and Maintenance & Cleaning information as well as any other additional information.

DEFINITIONS AND DISCLAIMER

Galvin Engineering manufactures a range of products marked as Ligature Resistant or Vandal Resistant. Please visit www.galvinengineering.com.au to read the definition of these terms and the disclaimer that applies to these products.